

# Mushroom Stakes

*Creative Paradise Inc.*

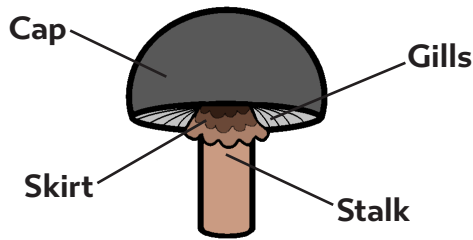
## Materials:

- LF208 Mushroom Stakes
- COE90 Frits (See Right)
- Suitable Glass Separator/ZYP
- Frit Placement Tools

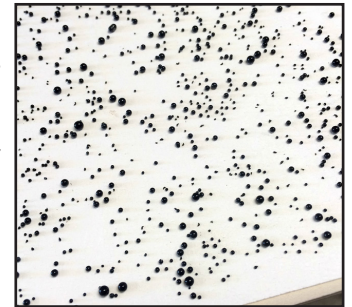
## Suggested Frits:

- Powder Grain:
  - Black
  - Butterscotch Opal
  - Pea Pod Opal
- Fine Grain:
  - Deco Gray Opal
  - Marzipan Opal
- Medium Grain:
  - Tomato Red Opal
  - Golden Green Opal
  - Rhubarb Shift Tint
  - Clear

To help with frit placement, here's a simple diagram with some basic mushroom parts:



To create the spots on the tall mushroom shown in this tutorial, you'll need small dots of frit like the ones shown to the right. You can create these by sprinkling some Medium Grain Frit (Tomato Red Opal used here in the tall mushroom) onto a kiln shelf or flat dam mold treated with glass separator. Fire this frit using your favorite Full Fuse schedule or the suggested schedule in **Table 1** on **Page 2**.



For more on making these dots, check our Garden Bug tutorial [by clicking here!](#)

**Before beginning prepare your mold thoroughly with suitable glass separator. We recommend spray-on ZYP. Always wear a mask when using spray-on separator and/or powder frit!**



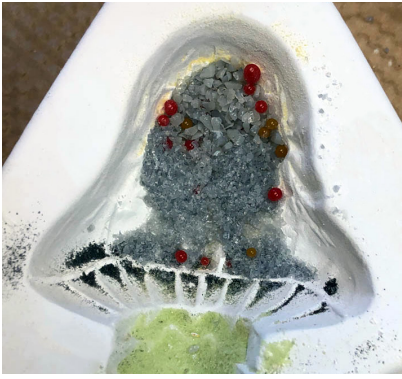
Once the separator is dry, begin by placing Powder Black into the spots of the short mushroom and the gills and skirt of the taller mushroom.



Place Powder Butterscotch Opal in the gills and skirt of the shorter mushroom and in the cap of the taller mushroom.



Add Powder Pea Pod Opal to the fringes around the skirt of the taller mushroom and over the black spots of the shorter mushroom.



Scatter a few of the Tomato Red dots made previously into the cap of the taller mushroom. Tweezers are a great help if you want to place them a bit more precisely.

Back the dots with some Fine Deco Gray Opal and add a few more dots around its perimeter. Place an additional bit of Fine Deco Gray Opal into the gills and skirt area of the shorter mushroom as well.



Add Fine Marzipan Opal into the top portion of the cap of the shorter mushroom and gill and skirt area of the taller mushroom.



Place a bit of Medium Golden Green Opal towards the top of both stems.



Add a thin layer of Medium Rhubarb Shift Tint along the lengths of both stems.



Back with Medium Clear until full. If using fill weights, the tall mushroom should hold roughly 62 grams and the short 48 grams. Transfer the filled mold to a level shelf in the kiln and fire using the suggested schedule in **Table I** or your own preferred Full Fuse.

Table I: Full Fuse*			
Seg.	Rate	Temp (°F)	Hold
1	300	1150	45
2	150	1370	20
3	400	1465	10
4	9999	900**	60
5	100	800	05

\*\*If using COE96, adjust this to 950°F

\*Before firing, it's important to know your kiln to see if you need to adjust our suggested schedules for your use. For tips on how to do that, [please click here to see our Important Firing Notes!](#)

As long as all your glass is fusible and compatible, any size, color, and opacity of frit can be used to create your mushrooms. This tutorial is just a guideline- try experimenting with combinations that strike your own creative fancy!

