

# Footed Flouncy

*Creative Paradise Inc.*

## Materials:

- [GM265 Flouncy Shelf Ring](#)
- [GM266 Round Foot](#)
- COE96 Glass (See Below)
- Suitable Glass Separator/ZYP
- Kiln Shelf Paper
- Glass Cutting Tools
- Circle Cutter
- Straight Edge and Marker
- Liquid Hair Spray
- Wire (Optional for Hanging)

## Suggested Glass:

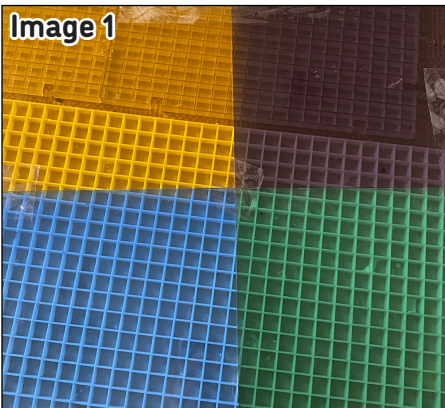
- |                      |                           |
|----------------------|---------------------------|
| - Sheet Glass:       | - Sheet Glass con't:      |
| - Standard Clear     | - Black                   |
| - Sea Green Trans.   | - (or F3 Med. Black Frit) |
| - Pale Blue Trans.   | - Other:                  |
| - Pale Amber Trans.  | - Black Stringers         |
| - Light Grape Trans. |                           |



Example 1

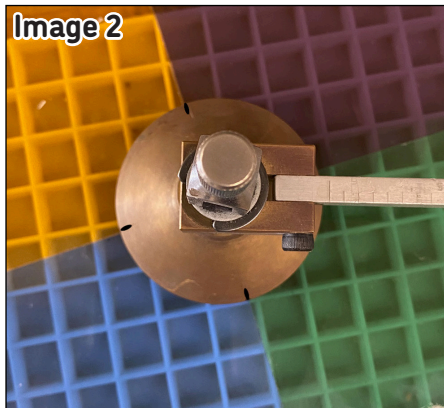
Prime the molds thoroughly with suitable glass separator before beginning. We recommend spray-on ZYP.  
**If using spray-on separator, always wear a mask during application.**

Image 1



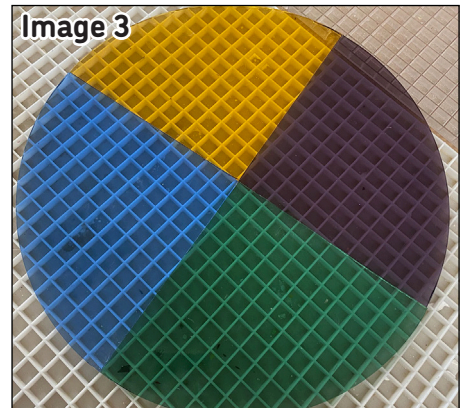
Begin by cutting 8" squares of the Sea Green, Pale Blue, Pale Amber, and Light Grape and aligning them in a grid as shown above. Adding small pieces of tape where the squares meet can help keep them in place while you work.

Image 2



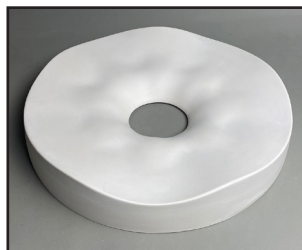
Place a Circle Cutter set to cut a 12.75" dia. circle in the middle of the squares such that the marks of the suction cup are aligned with the seams between the colors.

Image 3



Hold the center of the Circle Cutter tightly in place and score a circle around the glass, resulting in a quarter circle of each color. Break the edges away to create a 12.75" circle made of four equal, separately colored parts.

## Featured Molds:



**GM265 Flouncy Shelf Ring**  
Mold: 13" Dia. x 2" T  
Opening: 3" Dia.



**GM266 Round Foot**  
Mold: 4" Dia. x 1" T  
Fill Weight: 95 grams

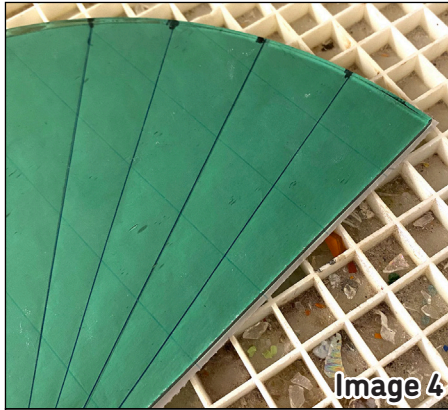


Image 4

Use **Pattern 1** on **Page 4** and a Marker to divide each quarter circle into eight equal parts. Use a Straight Edge to score from the outside mark inwards to the center point of the quarter circle.

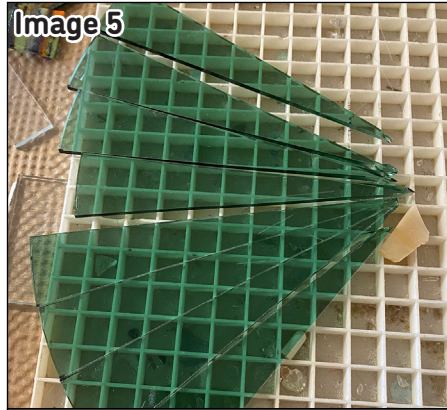


Image 5

Break along the centermost score line to create two pieces. Break each of those two pieces along their center score line, then repeat with the resulting four pieces for a total of eight pieces. Continue until each quarter circle has been separated into eight equal wedges.



Image 6

Cut a 13" dia. circle of Standard Clear. Arrange the colored wedges in a Light Grape, Pale Blue, Sea Green, Pale Amber sequence around the circle. There will be a small void in the center where the color wedges meet.

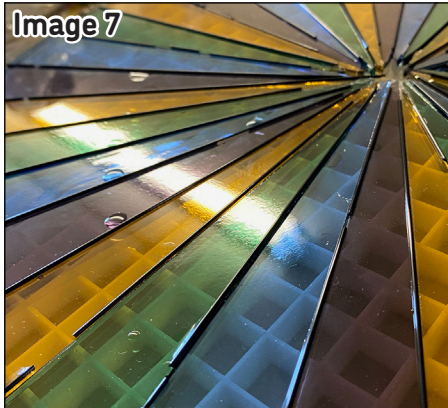


Image 7

Place Black Stringers in the gaps between each color wedge. A bit of Liquid Hair Spray can help keep them in place. Smaller or broken Stringer bits can add a quirky pop-art effect along the borders as well. Fill the center area with nipped Black Sheet Glass or F3 Black Frit.



Image 8

Transfer the project to a 14" circle of Kiln Shelf Paper on a level shelf in the kiln and fire using the suggested schedule in **Table 1** or your own preferred Full Fuse.



Image 9

The circle after fusing. This particular piece used F3 Black Frit in the middle. The piece shown in **Example 1, Page 1**, and in **Images 12 & 13 on Page 3** used nipped Black Sheet Glass.



Image 10

If your kiln is large enough, you can fuse the Foot in this same firing. Fill the primed GM266 with suitable glass (nipped pieces of Standard Clear here) and place in the kiln. Take care not to scrape the sides as you fill. If using fill weights, this is about 95 grams of glass.

(If your kiln is too small, simply fire the filled GM266 separately with the same **Table 1** or Full Fuse schedule)

**Table 1: Full Fuse\***

Seg.	Rate	Temp (°F)	Hold
1	300	1150	60
2	50	1300	20
3	350	1460	10
4	9999	950**	90

\*\*If using COE90, adjust this to 900°F

\*Before firing, it's important to know your kiln to see if you need to adjust our suggested schedules for your use. For tips on how to do that, [please click here to see our Important Firing Notes!](#)

Image 11



To combine the Flouncy and Foot, begin by placing a small piece of Kiln Shelf Paper on a level shelf in the kiln. Place the primed Flouncy mold so the Paper completely fills the empty center space, then center the fused Foot in the open center on top of the paper.

Image 12



Center the fused glass blank on top of the Flouncy and fire using the suggested schedule in **Table 2**, adjusted as needed for your kiln.

Image 13



After fusing, allow ample time for the glass to cool down naturally before opening the kiln or removing the glass.

Image 14



To hang the Footed Flouncy, cut a 7" long piece of wire and twist a loop in one end. Then curve the wire around the Foot as shown.

Image 15



Wrap the wire around the base of the Foot several times, then wrap it back around itself at the base of the previously created loop.

Image 16



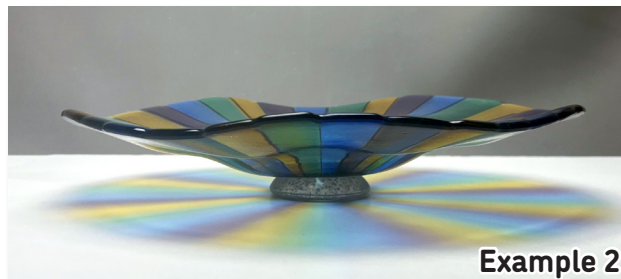
This wrapped wire serves as a stable base for a wall hanging piece. This project is quite heavy though, so take care where you hang it.

Table 2: Slump onto Foot\*

Seg.	Rate	Temp (°F)	Hold
1	275	1150	30
2	350	1290	10
3	9999	950**	90
4	100	700	10

\*\*If using COE90, adjust this to 900°F

\*Before firing, it's important to know your kiln to see if you need to adjust our suggested schedules for your use. For tips on how to do that, [please click here to see our Important Firing Notes!](#)



Example 2

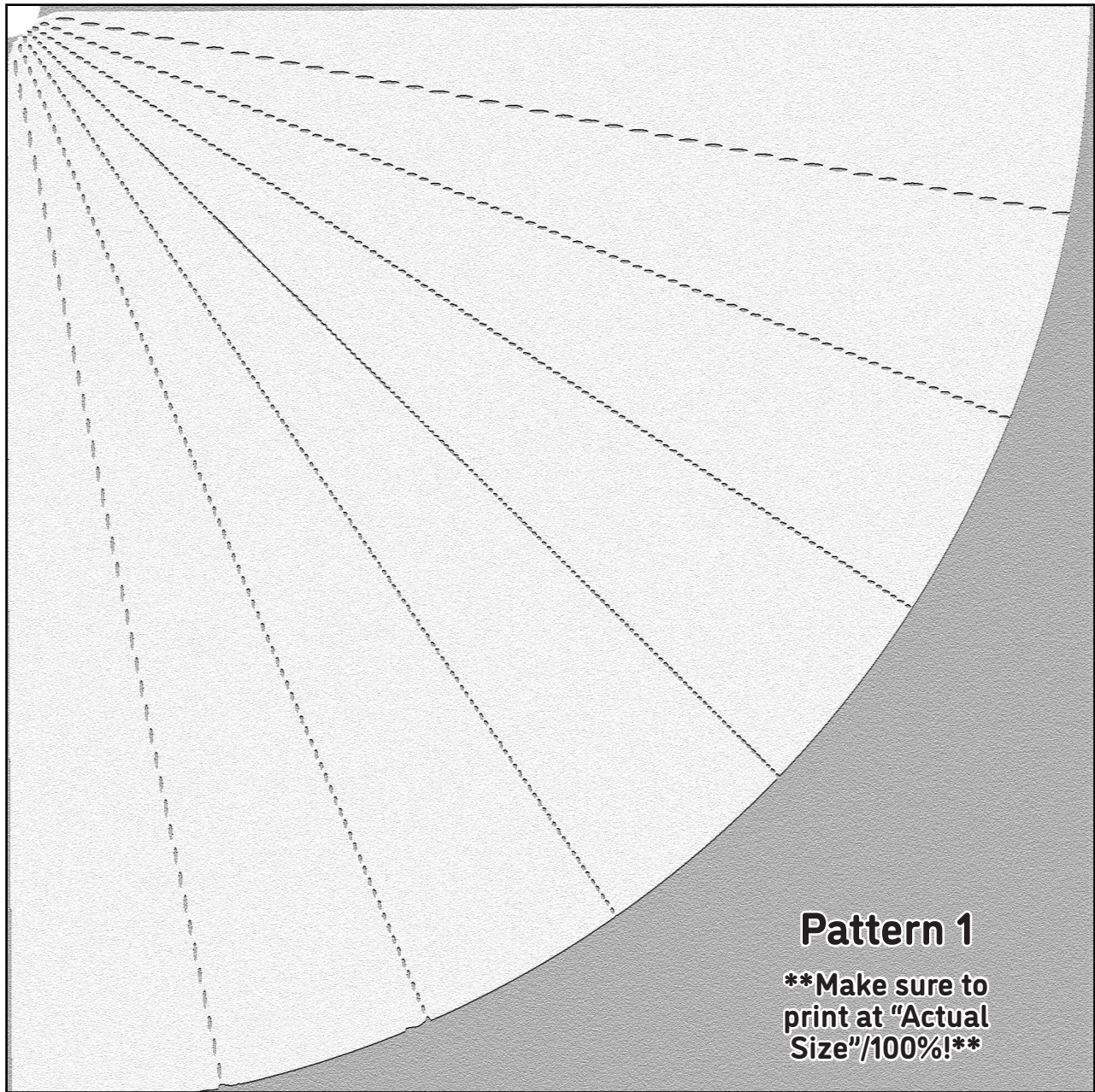
Note that hanging is completely optional- the Footed Flouncy works just as well as a bowl or decorative piece!

[www.creativeparadiseglass.com](http://www.creativeparadiseglass.com)

*Creative Paradise Inc.*

# Pattern and Schedules

(for Easier Printing)



**Table 1: Full Fuse\***

Seg.	Rate	Temp (°F)	Hold
1	300	1150	60
2	50	1300	20
3	350	1460	10
4	9999	950**	90

**Table 2: Slump onto Foot\***

Seg.	Rate	Temp (°F)	Hold
1	275	1150	30
2	350	1290	10
3	9999	950**	90
4	100	700	10

\*Before firing, it's important to know your kiln to see if you need to adjust our suggested schedules for your use. For tips on how to do that, [please click here to see our Important Firing Notes!](#)

\*\*If using COE90, adjust these to 900°F

For more information, tutorials, and molds, visit our website:  
[www.creativeparadiseglass.com](http://www.creativeparadiseglass.com)

*Creative Paradise Inc.*★