

# A Flurry of Frit Slurries! *Creative Paradise Inc.*

The "Frit Slurry" technique can be used to produce a wide variety of beautifully colored works. This tutorial covers various applications and methods of using slurries with several different Creative Paradise molds. For our Basic Frit Slurry Tutorial that goes over what a frit slurry is and details on how to make them, [please click here](#).

Each project in this tutorial is organized so that **you can print only the pages relating to the project you want to do** and still have all the information required.

## In This Tutorial:

- **Pages 1-2:** Tie-Dye Quad Swoop (GM142)
- **Pages 3-4:** Ocean Flower Bowl (GM88)
- **Pages 5-6:** Pretty Poppy (GM48)
- **Page 7:** Other Ideas and Tips

## Useful References:

- For a video on applying spray-on ZYP to prepare molds, [please click here!](#)
- For our Notes on getting to know your kiln before firing, [please click here!](#)
- For our basic Frit Slurry tutorial, [please click here!](#)

## Tie-Dye Quad Swoop

### Materials:

- [GM142 Quad Swoop Slump](#)
- COE96 Glass (See Right)
- Suitable Glass Separator/ZYP
- For Frit Slurry:
  - Water and Spray Bottle
  - Paper Towels
  - Paper Cups or Small Bowls
  - Plastic Knife and Spoon

### Suggested Glass:

- Double Thick Clear Sheet Glass
- F1 Powder Frits:
  - Black Opalescent
  - Deep Purple Trans.
  - Bronze Trans.
  - Turns Pink Striker Trans.
  - Medium Amber Trans.
  - Orange Trans.

### To Create a Frit Slurry:

Put the desired color of powder frit in a small mixing cup and add enough water to just barely cover the top of the frit. Adding water with a Spray Bottle can prevent adding too much liquid. Mix with a spoon until a pancake batter-like consistency is achieved. Make sure to use a separate container for each color!

Before beginning, prepare the mold thoroughly with suitable glass separator. We recommend spray-on ZYP.

**Remember to always wear a mask when applying spray-on separator or working with dry powder frit.**



Cut and clean an 8.25" square of Double Thick Clear.

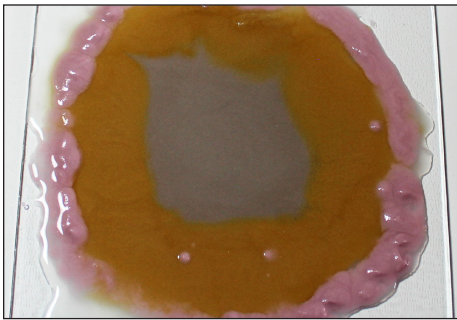


Create a slurry with Bronze (refer to **Red Dashed Box** above). Place the slurry into the center of the square, then shake the glass gently from side to side to evenly disperse it.

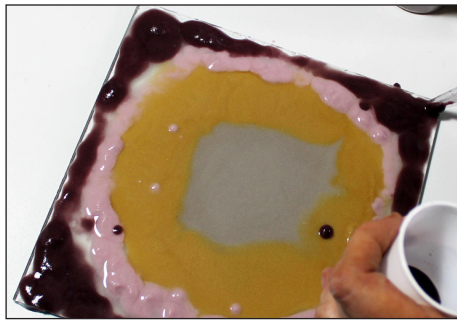


Create a slurry with Medium Amber and add it in a circle around the Bronze center. If you see areas where frit is clumping, gently shake the sheet glass to settle them.

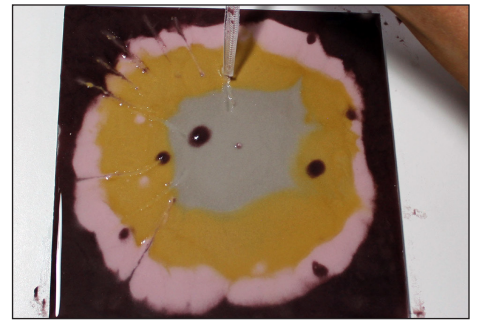
# Tie-Dye Quad Swoop



Make a slurry with Turns Pink and place it around the Amber, once again shaking the sheet glass gently to evenly disperse.

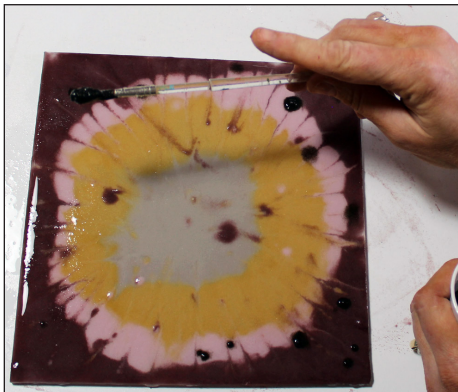


Create a slurry with Deep Purple and fill the rest of the square. Give the sheet glass a final gentle shake to distribute everything.

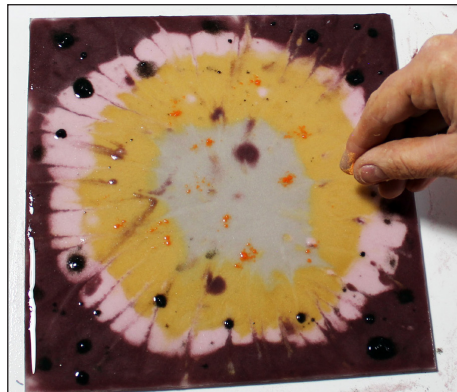


Drag the Deep Purple into the other colors using a plastic knife or similar tool. If the slurries start to dry, give them a spritz with the spray bottle to make them easier to mix.

**Note:** While placing slurries, you may get bits that fall outside the intended area. Due to the looseness of slurries this is almost inevitable, but we feel they often add to the visual interest of the final piece. If you prefer them gone, you can remove them by scooping gently with a clean plastic spoon.



Create a small amount of Black slurry and use it to drop and flick spots here and there onto the other colors.



Sprinkle bits of dry F1 Orange into small mounds across the top of the wet frit. Once you're happy with your design, lift the glass carefully, wipe the edges with a paper towel, and put it aside somewhere flat and safe for a few hours to dry out.



Place the GM142 that has already been primed with separator onto a level shelf in the kiln. Once your slurried glass is dry, center it on top of the mold in the kiln. Fire using the suggested One-and-Done schedule in **Table 1**, adjusted as needed for your kiln.

Seg.	Rate	Temp (°F)	Hold
1	200	190	30
2	200	550	10
3	275	1215	45
4	350	1400	03
5	9999	950**	60
6	100	500	00

\*\*If using COE90, adjust this to 900°F

\*Before firing, it's important to know your kiln to see if you need to adjust our suggested schedules for your use. For tips on how to do that, [please click here to see our Important Firing Notes!](#)

# Ocean Flower Bowl



*Creative Paradise Inc.*

## Materials:

- GM88 Organic Slump
- COE96 Glass (See Right)
- Suitable Glass Separator/ZYP
- For Frit Slurry:
  - Water and Spray Bottle
  - Paper Towels
  - Paper Cups or Small Bowls
  - Plastic Knife and Spoon

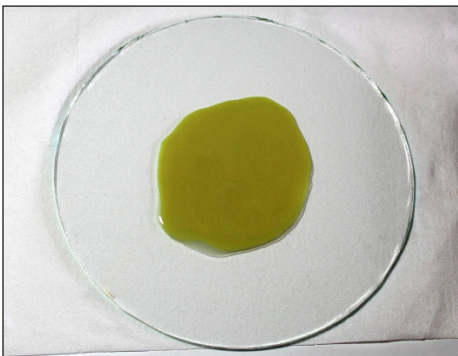
## Suggested Glass:

- Double Thick Clear Sheet Glass
- F1 Powder Frits:
  - Black Opal
  - Yellow Trans.
  - Teal Green Trans.
  - Deep Aqua Trans.
  - Cobalt Blue
- F2 Fine Flame Red Opal Frit
- F3 Medium Yellow Opal Frit

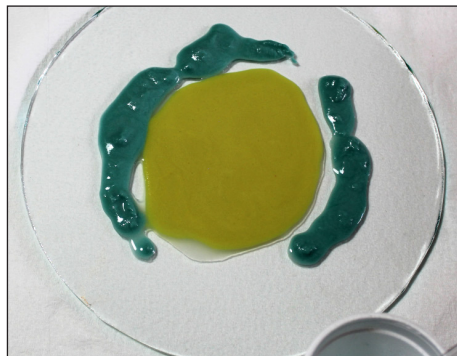
## To Create a Frit Slurry:

- Put the desired color of powder frit in a small mixing cup and add enough water to just barely cover the top of the frit. Adding water with a Spray Bottle can prevent adding too much liquid. Mix with a spoon until a pancake batter-like consistency is achieved.
- Make sure to use a separate container for each color!

Before beginning, prepare the mold thoroughly with suitable glass separator. We recommend spray-on ZYP. **Remember to always wear a mask when applying spray-on separator or working with dry powder frit.**



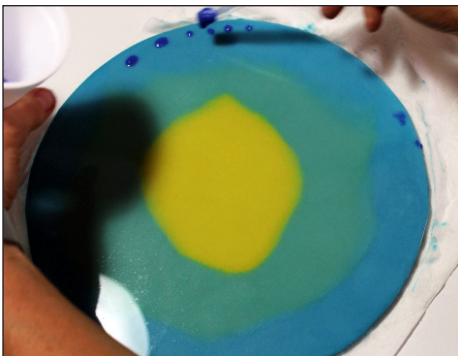
Cut and clean a 10" circle of Double Thick Clear. Create a slurry with Yellow (refer to **Red Dashed Box** above) and place it in the center of the circle. Shake the sheet glass gently to evenly disperse the slurry.



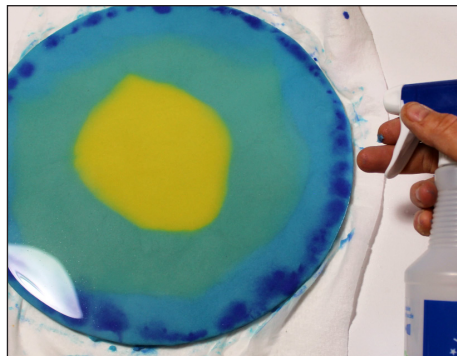
Create a slurry with Teal Green and place it around the Yellow. The mixture may be a bit clumpy, but another few gentle shakes of the sheet glass will help it redistribute.



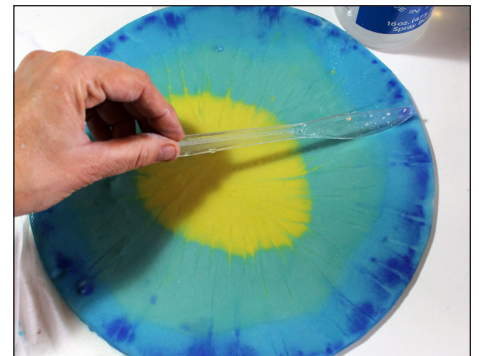
Make a Deep Aqua slurry and place it around the Teal Green. Spread it out to the edges of the sheet glass circle and gently shake to even it out.



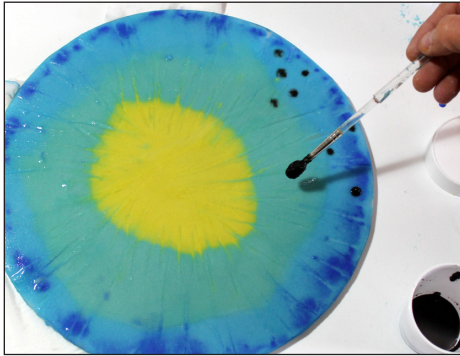
Create a small amount of Cobalt Blue slurry and dab small dots here and there along the rim of the circle with a paintbrush or similar tool.



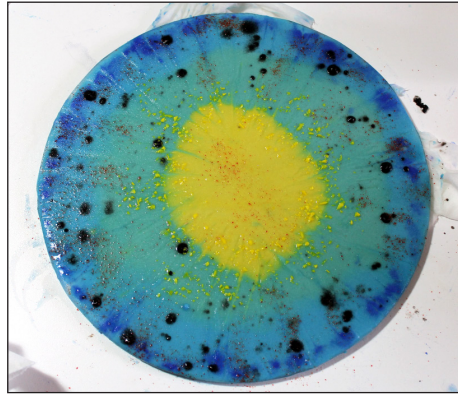
To blend the colors together, spritz the entire area gently with water and use a sharp tool such as a plastic knife to drag the colors back and forth as desired.



# Ocean Flower Bowl



Create a bit of Black slurry and flick and/or drop spots across the other colors of slurry.



Sprinkle a bit of dry F2 Flame Red and dry F3 Yellow onto the wet frit for additional visual contrast. Once done, gently wipe the edges of the sheet glass with a paper towel and set it aside somewhere safe and flat to dry.



Place the primed GM88 onto a level shelf in the kiln. Once your slurred glass is dry, center it on top of the mold in the kiln. Fire using the suggested One-and-Done schedule in **Table 1**, adjusted as needed for your kiln.

**Note:** While placing slurries, you may get bits that fall outside the intended area. Due to the looseness of slurries this is almost inevitable, but we feel they often add to the visual interest of the final piece. If you prefer them gone, you can remove them by scooping gently with a clean plastic spoon.

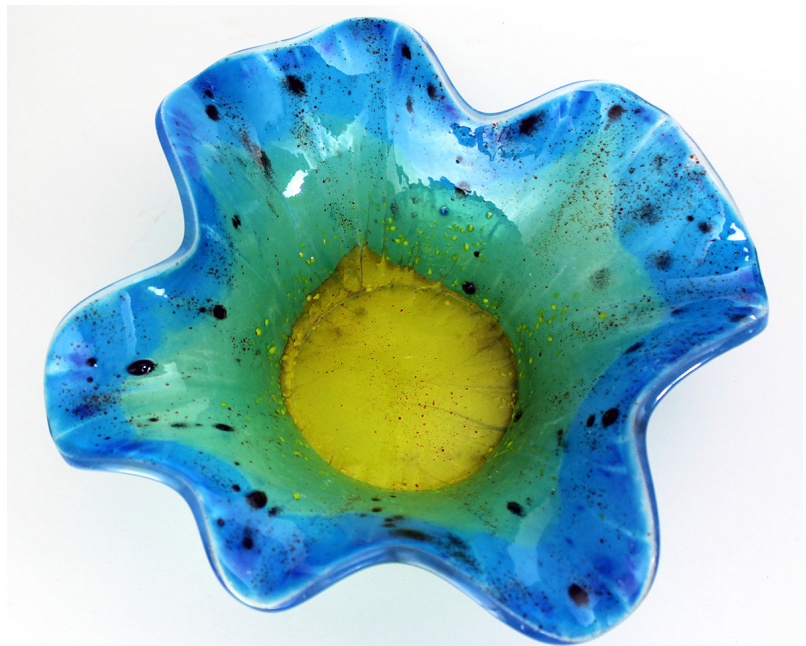
**Table 1: One-and-Done (Fuse and Slump)\***

Seg.	Rate	Temp (°F)	Hold
1	200	190	30
2	200	550	10
3	275	1215	45
4	350	1400	03
5	9999	950**	60
6	100	500	00

\*\*If using COE90, adjust this to 900°F

\*Before firing, it's important to know your kiln to see if you need to adjust our suggested schedules for your use. For tips on how to do that, [please click here to see our Important Firing Notes!](#)

For an additional short video showcasing parts of this tutorial, [please click here!](#)



## Materials:

- GM48 Ripple Drape
- COE96 Glass (See Right)
- Suitable Glass Separator/ZYP
- For Frit Slurry:
  - Water and Spray Bottle
  - Paper Towels
  - Paper Cups or Small Bowls
  - Plastic Knife and Spoon

## Suggested Glass:

- Double Thick Clear Sheet Glass
- F1 Powder Frits:
  - Black Opal.
  - Yellow Trans.
  - Orange Trans.
  - Grenadine Red Trans.
- F2 Fine Orange Opal Frit
- F3 Medium Marigold Opal Frit

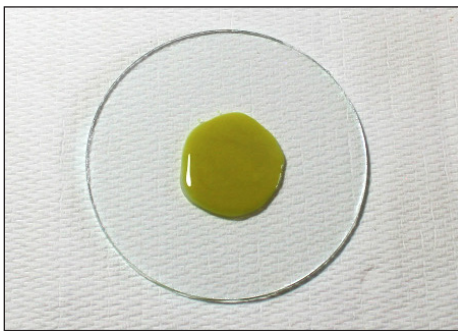
### To Create a Frit Slurry:

Put the desired color of powder frit in a small mixing cup and add enough water to just barely cover the top of the frit. Adding water with a Spray Bottle can prevent adding too much liquid. Mix with a spoon until a pancake batter-like consistency is achieved. Make sure to use a separate container for each color!

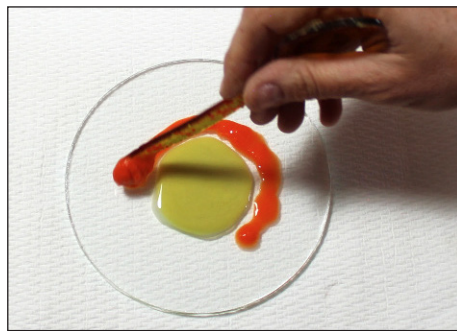


Before beginning, prepare the mold thoroughly with suitable glass separator. We recommend spray-on ZYP. **Remember to always wear a mask when applying spray-on separator or working with dry powder frit.**

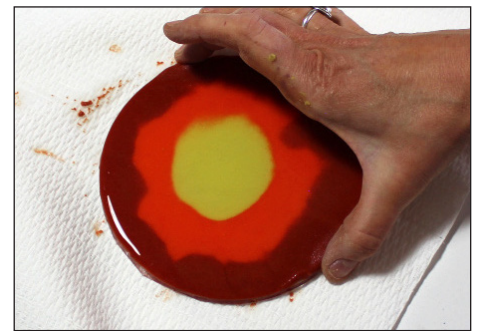
*Creative Paradise Inc.*



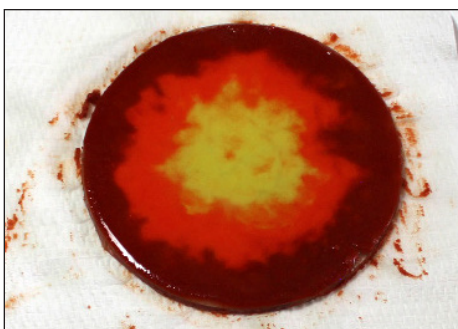
Cut and clean a 10" circle of Double Thick Clear. Create a slurry with Yellow (refer to **Red Dashed Box** above) and place it in the middle of the circle. Shake the sheet glass gently to evenly disperse the slurry.



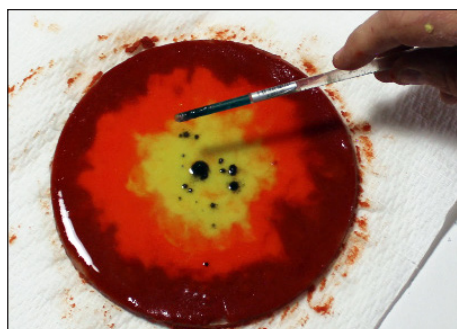
Make an Orange Trans. slurry and add it in a circle around the Yellow center.



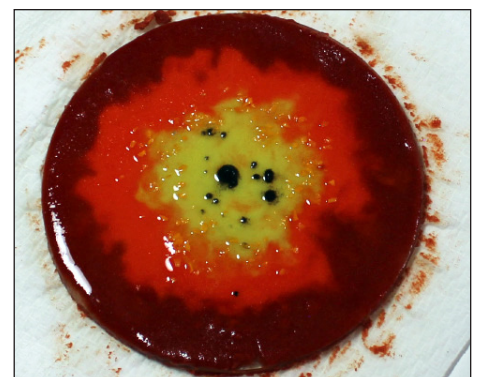
Make a Grenadine Red slurry and place it around the Orange. Spread it all the way to the outer edge, then gently shake the circle to evenly distribute the frit.



Use your fingers or a plastic knife to blend the colors together.

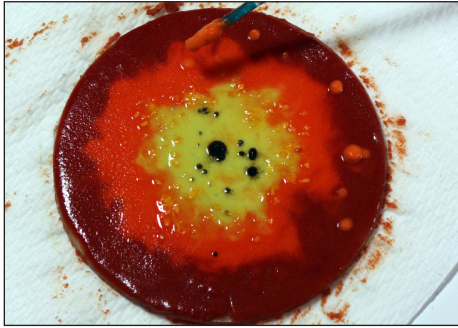


Create a small amount of Black slurry and dab or flick it in the Yellow center.



Sprinkle dry F3 Marigold frit into the center around the Black accents.

# Pretty Poppy



Make a small amount of Orange Opal slurry and dab small mounds here and there around the outer Grenadine Red ring.



Once you're happy with your design, carefully wipe the edges off with paper towel and set it aside somewhere safe and flat to dry.



Place the GM48 that has already been primed with separator onto a level shelf in the kiln. Once your slurried glass is dry, center it on top of the mold in the kiln. Fire using the suggested One-and-Done schedule in **Table 1**, adjusted as needed for your kiln.

**Note:** While placing slurries, you may get bits that fall outside the intended area. Due to the looseness of slurries this is almost inevitable, but we feel they often add to the visual interest of the final piece. If you prefer them gone, you can remove them by scooping gently with a clean plastic spoon.

Seg.	Rate	Temp (°F)	Hold
1	200	190	30
2	200	550	10
3	275	1215	45
4	350	1400	03
5	9999	950**	60
6	100	500	00

\*\*If using COE90, adjust this to 900°F

\*Before firing, it's important to know your kiln to see if you need to adjust our suggested schedules for your use. For tips on how to do that, [please click here to see our Important Firing Notes!](#)

For a fun way to both display and add life to glass flowers such as this poppy, you can place them on Copper Tube stems! For more details, take a look at our [Basic Stemming Tutorial by clicking here](#). Or for more information on glass flowers in general, check out our Fused Glass Flowers Book, available for purchase [at this link](#).



## Other Examples and Tips:

These two punchy purple examples were made using the same techniques as the other projects in this tutorial. The mold and colors used are listed below each example, as well as any specific additional techniques. All glass used was COE96.



The above example was made using the same colors and materials as the first project in this tutorial but using an 8.5" circle of Double Thick Clear and slumping on the GM88 instead.

All frits and other techniques used were the same, as was the firing schedule.



**Base:** 6" circle of Double Thick Clear  
**Slurries (F1 Powder Frits):**

- Yellow Trans. (Center)
- Turns Pink Trans. (Petals)
- Deep Purple Trans. (Outside Center and Outside Petals)
- Orange Trans. (Dots on Center)

Drag back and forth between the Turns Pink petals and the Deep Purple outer ring with a thin tool such as a plastic knife.

Slump on the [GM51 Slump with Hump](#) using the One-and-Done firing schedule found in **Table 1** on **Pages 2, 4, or 6**.

### **Top Tips for Frit Slurries:**

- Place a paper or cloth towel under your base sheet glass when adding slurries. The process can get quite messy, and this helps contain a lot of the mess.
- Use only powder frits to create slurries, as larger grains tend to create uneven slurries, leading to uneven frit distribution.
- Use a paper or cloth towel to clean the edges and underside of the sheet glass base after you finish your slurry design, as they may have stray bits and drips of frit on them.
- Frit slurries are much looser than working with dry frit. Drips and drops on areas where you didn't originally intend them are almost inevitable. Consider them part of the artistic process! Or you can remove them with a clean plastic spoon.

### **A Note on Firing Schedules:**

The suggested schedule used for all the projects shown in this tutorial begins with two segments of a very slow ramp-up. These segments are present to ensure that the slurry is completely dry before it begins to fuse. While not 100% necessary for the One-and-Done schedule, they do provide a good safety net just in case the slurries aren't totally dry.

Page 7

For more information, tutorials,  
and molds, visit our website:  
[www.creativeparadiseglass.com](http://www.creativeparadiseglass.com)

*Creative Paradise Inc.*★