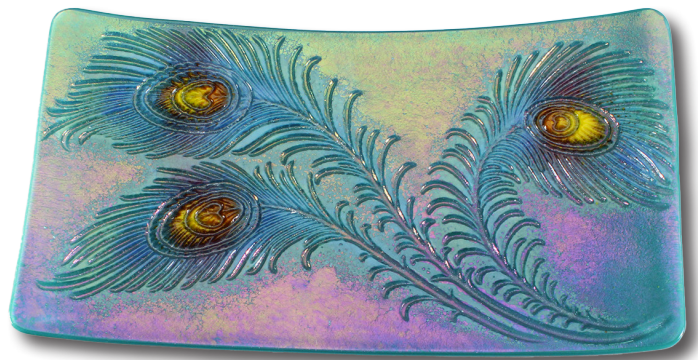


# Iridescent Peacock Tray

Creative Paradise Inc.

## Materials:

- DT08 Peacock Texture
- GM132 XL Sushi
- COE96 Glass (See Below)
- Suitable Glass Separator/ZYP
- Frit Placement Tools
- Glass Cutting Supplies
- 1/2" Kiln Posts



Example 1

## Suggested Glass:

- |                      |                         |                      |
|----------------------|-------------------------|----------------------|
| - F1 Powder Frit:    | - F2 Fine Frits con't:  | - Sheet Glass:       |
| - Deep Purple Trans. | - Cobalt Blue Trans.    | - Clear Iridized     |
| - F2 Fine Frits:     | - Medium Blue Trans.    | - Peacock Green Opal |
| - Yellow Opal        | - Turquoise Blue Trans. |                      |
| - Marigold Opal      | - Pastel Green Opal     |                      |

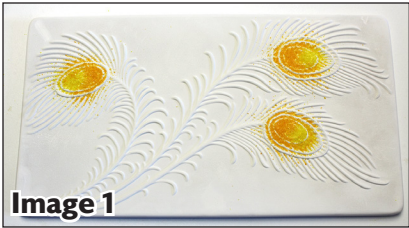


Image 1



Image 2

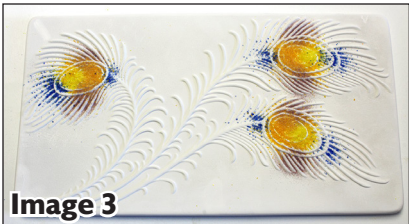


Image 3

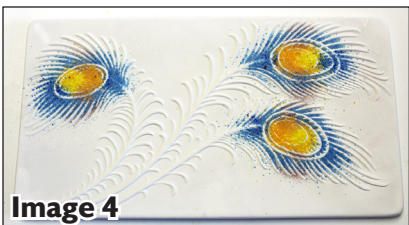


Image 4



Image 5



Image 6

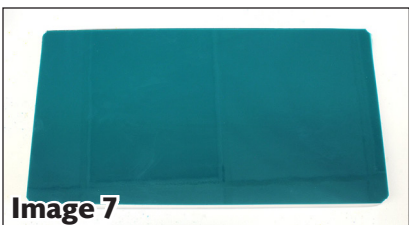


Image 7

Begin by treating each mold well with suitable glass separator. We recommend spray-on ZYP. Always wear a mask when applying spray-on separator or using powder frit.

**Remember that the frit placed first onto the texture will be the frit on the surface of the finished piece.**

Once the separator is dry start by adding F2 Yellow Opal and F2 Marigold into the eye of each feather (**Image 1**). Sprinkle or sift F1 Deep Purple along the sides of each eye (**Image 2**) and add a bit of F2 Cobalt Blue above and below each eye as well (**Image 3**).

Sprinkle F2 Medium Blue over the Deep Purple and Cobalt around each eye (**Image 4**). Add F2 Turquoise Blue around the entire perimeter of each feather, including over the frit already by the eyes (**Image 5**). Sprinkle F2 Pastel Green over the Turquoise and a bit beyond to extend the perimeter (**Image 6**).

Cut and clean a 6.75" x 12.75" piece of Clear Iridized sheet glass and place it onto the filled mold, irid side facing down (**Image 6**). Cut and clean a 6.75" x 12.75" piece of Peacock Green sheet glass and center it atop the Clear Irid (**Image 7**).

Transfer the mold onto 1/2" Kiln Posts on a level shelf in the kiln and fire using the suggested schedule in **Table 1** or your own preferred Full Fuse. Once the glass has cooled (**Image 8**), center it texture side up on the primed GM132 on a level shelf in the kiln and fire using the suggested schedule in **Table 2** or your own favorite Slump schedule.

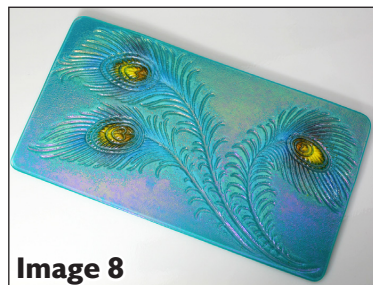
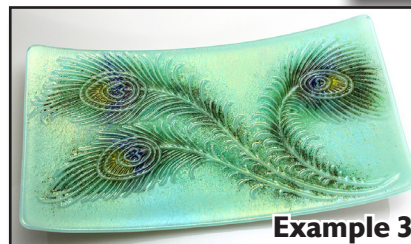


Image 8



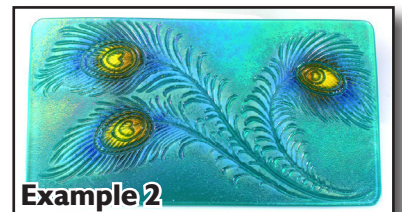
Example 3

| Seg. | Rate | Temp (°F) | Hold |
|------|------|-----------|------|
| 1    | 275  | 1215      | 45   |
| 2    | 50   | 1240      | 20   |
| 3    | 200  | 1330      | 10   |
| 4    | 350  | 1465      | 10   |
| 5    | 9999 | 950**     | 60   |
| 6    | 100  | 500       | 00   |

| Seg. | Rate | Temp (°F) | Hold |
|------|------|-----------|------|
| 1    | 275  | 1100      | 15   |
| 2    | 200  | 1250      | 30   |
| 3    | 9999 | 950**     | 90   |
| 4    | 100  | 750       | 05   |

\* Before firing, it's important to know your kiln to see if you need to adjust our suggested schedules for your use. For tips on how to do that, [please click here to see our Important Firing Notes!](#)

\*\* If using COE90, adjust these to 900°F



Example 2

**Examples 2 & 3** illustrate how different shades of frit and sheet glass can be used with this technique for a variety of results.